

S-LOWA operators to model the Boolean connectives in fuzzy linguistic queries

E. Herrera-Viedma, S. Alonso,
F.J. Cabrerizo
Dept. Computer Sciences & A.I.,
University of Granada, Spain.
viedma,salonso,cabrerizo@decsai.ugr.es

A.G. López-Herrera
Dept. Computer Sciences,
University of Jaén, Spain.
aglopez@ujaen.es

C. Porcel
Dept. Computer Sciences & A.N.,
University of Córdoba, Spain
carlos.porcel@uco.es

Abstract

A new family of parameterized soft computing operators, called S-LOWA operators, is proposed for modelling the control semantics in the action of the connectives AND and OR in an ordinal fuzzy linguistic information retrieval system.

Keywords: Aggregation Operators, Information Retrieval, Weighted Queries, Linguistic Modelling.

1 Introduction

Information Retrieval (IR) may be defined, as the problem of the selection of documentary information from storage in response to search questions provided by a user, which are expressed by a query [1, 14]. Information Retrieval Systems (IRSs) deal with documentary bases containing textual, pictorial or vocal information, organized in documents, and process user queries trying to allow the user to access to relevant information in an appropriate time interval. IRSs present three components to carry out this activity [10]: i) *an archive of documents*: to store the documents and the index terms, ii) *a query subsystem*: to formulate the user queries, and iii) *an evaluation subsystem*: to obtain the Retrieval Status Value (RSV) for each document. The query subsystem supports the user-IRS interaction, and therefore, it should be able to deal with the imprecision and vagueness typical of human communication. This aspect may be modelled by means of the introduction of weights in the query language. By attaching weights in a query, a user can increase his/her expressiveness and provide a more precise description of his/her desired documents. Fuzzy Set Theory provides a *soft computing methodology* which may be used to model and process the weights in the queries. Many authors have proposed

fuzzy weighted IRS models assuming numeric weights [2, 3, 6, 7]. However, it seems more natural to characterize the contents of the desired documents by explicitly associating a linguistic weight to elements in a query, such as "important" or "very important", instead of a numerical value. So, some fuzzy linguistic IRS models [4, 5, 10, 11, 12] have been proposed using a *fuzzy linguistic approach* [19] to model the query weights and RSVs, being useful the called *ordinal fuzzy linguistic approach* [9].

Most of the existing IRSs use Boolean queries [1, 14]. In this context, each user query is expressed as a combination of the index terms which are connected by the logical connectives AND (\wedge), OR (\vee), and NOT (\neg). Thereby, the retrieval process can be controlled from four different weighting levels [10, 12]: i) *level of individual terms*, ii) *level of sub-expressions*, which are associations of terms related by logical connectives, iii) *level of the whole query*, which is the biggest sub-expression, and iv) *level of logical connectives*. The first three levels are the most often applied by users. Usually, in these weighting levels weights have been interpreted using any of the following four different semantics [3, 10, 12]: i) as a measure of the importance of a specific element in representing the query, or ii) as a threshold to aid in matching a specific document to the query, or iii) as a description of an ideal or perfect document, or iv) as a limit on the amount of documents to be retrieved for a specific element. The weighting level of logical connectives has not been studied very much. However, its use can enable users to represent their requirements better. For example, a connective weight can be an expression of a desired interrelationship between the specified terms in the query, and as such it can be seen as a user parameter that controls the action of the logical connectives in the evaluation of the relevance of documents from query terms.

The main aim of the paper is to present a family of pa-

parameterized soft computing operators, called S-LOWA operators, which allows users to model in a soft way the semantics of the Boolean connectives of the queries in fuzzy linguistic IRSs.

The paper is set out as follows. The ordinal fuzzy linguistic approach together with the S-LOWA operators are presented in Section 2. The fuzzy weighted linguistic IRS is defined in Section 3. In Section 4 an example of performance is shown and finally, Section 5 includes our conclusions.

2 The Ordinal Fuzzy Linguistic Approach

The *ordinal fuzzy linguistic approach* is a fuzzy approximate technique appropriate to deal with qualitative aspects of problems [10]. It models linguistic information by means of ordinal linguistic labels supported by a *linguistic variable* [19]. A linguistic variable is defined by means of a syntactic rule and a semantic rule. In an ordinal fuzzy linguistic approach the syntactic rule is defined by considering a finite and totally ordered label set $S = \{s_i, i \in \{0, \dots, \mathcal{G}\}\}$ in the usual sense, i.e., $s_i \geq s_j$ if $i \geq j$, and with odd cardinality (such as 7 or 9 labels), where the mid term represents an assessment of "approximately 0.5" assuming the unit interval $[0,1]$ as reference domain, and the rest of the terms being placed symmetrically around it. The semantics of the linguistic term set is established from the ordered structure of the term set by considering that each linguistic term for the pair $(s_i, s_{\mathcal{G}-i})$ is equally informative. In any linguistic approach we need operators of management of linguistic information, such as: i) a *minimization operator*: $MIN(s_a, s_b) = s_a$ if $a \leq b$, ii) a *maximization operator*: $MAX(s_a, s_b) = s_a$ if $a \geq b$, iii) a *negation operator*: $NEG(s_i) = s_j$ | $j = \mathcal{G} - i$, and iv) some aggregation operators, for example the LOWA operator [9].

2.1 The LOWA Operator

Definition 1. Let $A = \{a_1, \dots, a_m\}$ be a set of labels to be aggregated, then the LOWA operator, ϕ , is defined as

$$\phi(a_1, \dots, a_m) = W \cdot B^T = C^m \{w_k, b_k, k = 1, \dots, m\} = w_1 \odot b_1 \oplus (1 - w_1) \odot C^{m-1} \{\beta_h, b_h, h = 2, \dots, m\}$$

where $W = [w_1, \dots, w_m]$, is a weighting vector, such that, $w_i \in [0, 1]$ and $\sum_i w_i = 1$. $\beta_h = w_h / \sum_2^m w_k$, $h = 2, \dots, m$, and $B = \{b_1, \dots, b_m\}$ is a vector associated to A , such that, $B = \sigma(A) = \{a_{\sigma(1)}, \dots, a_{\sigma(m)}\}$ where, $a_{\sigma(j)} \leq a_{\sigma(i)} \forall i \leq j$, with σ being a permutation over

the set of labels A . C^m is the convex combination operator of m labels and if $m=2$, then it is defined as

$$C^2\{w_i, b_i, i = 1, 2\} = w_1 \odot s_j \oplus (1 - w_1) \odot s_i = s_k,$$

such that $k = \min\{\mathcal{G}, i + \text{round}(w_1 \cdot (j - i))\}$ $s_j, s_i \in S$, ($j \geq i$) where "round" is the usual round operation, and $b_1 = s_j$, $b_2 = s_i$. If $w_j = 1$ and $w_i = 0$ with $i \neq j \forall i$, then the convex combination is defined as: $C^m\{w_i, b_i, i = 1, \dots, m\} = b_j$.

The behavior of the LOWA operator can be controlled by means of the weighting vector W .

In order to classify OWA operators with respect to their location between *and* and *or*, Yager [17] introduced a measure (*orness measure*) to characterize the type of aggregation for a particular weighting vector W .

This measure, which lies in the unit interval, characterizes the degree to which the aggregation is like an *or* (MAX) operation. Note that the nearer W is to an *or*, the closer its measure is to one; while the nearer it is to an *and*, the closer is to zero. We can easily see that the dual operator of an OWA operator defined with weighting vector $W^\wedge = [w_i^\wedge = w_{m-i+1}]$ satisfies that $orness(W) = 1 - orness(W^\wedge)$, and therefore, if an OWA operator is *orlike* then its dual is *andlike*. The *andness measure* can be defined from the orness measure as [17] $andness(W) = 1 - orness(W)$.

2.2 The S-LOWA Operators

In our linguistic weighted IRS we need to aggregate ordinal fuzzy linguistic information and at the same time to interpret the connective weights. To do so, we introduce a new family of operators based on the LOWA operators [9], called S-LOWA operators.

The problem of the OWA operators is the determination of the weighting vector. A number of approaches have been suggested for obtaining the weights [16, 17]. Some of them allow the participation of users in the procedure for calculating the weights. In such cases, the behaviour of OWA operator may be guided or controlled by the user's preferences. One of these procedures consists of generating the weights from parameters provided by the users. In [18] were presented two parameterized OWA operators, denoted *S-OWA operators*, which can learn weighting vector from the *orness* and *andness* expressed by a user, respectively. The first operator is an *orlike S-OWA operator* with weighting vector W^{SO} defined as $w_1 = \frac{2-2\alpha}{m} + 2 \cdot \alpha - 1$, $\alpha \in [0.5, 1]$, $w_i = \frac{2-2\alpha}{m}$, for $i = 2, \dots, m$, with $\alpha = orness(W^{SO})$. The second one is an *andlike S-OWA operator* with weighting vector W^{SA} defined as

$w_m = \frac{2-2\alpha}{m} + 2 \cdot \alpha - 1, \alpha \in [0.5, 1], w_i = \frac{2-2\alpha}{m}$, for $i = 1, \dots, m-1$, with $\alpha = \text{andness}(W^{SA})$. When $\alpha = 0.5$ both OWA operators reduce to the arithmetic mean operator.

Then, in the evaluation of the user queries we shall use an *andlike S-LOWA operator* (ϕ^{SA}) and an *orlike S-LOWA operator* (ϕ^{SO}) to model the soft computing of the query logical connectives AND and OR, respectively.

3 A Weighted Linguistic IRS

In this Section, we present a weighted linguistic IRS model using the above ordinal fuzzy linguistic approach. This IRS presents a multi-level weighting scheme for formulating the user queries. In particular, it allows users to weigh the query terms and connectives. With a such scheme users can control better the retrieval of their desired documents.

3.1 Document Representation

$\mathcal{D} = \{d_1, \dots, d_m\}$ is a finite set of documents or records. Each document is represented by means of a finite set of index terms $\mathcal{T} = \{t_1, \dots, t_l\}$. The index terms describe the subject content of each document by means of a numeric indexing function $\mathcal{F} : \mathcal{D} \times \mathcal{T} \rightarrow [0, 1]$. Then, each document d_j is represented as a fuzzy subset of \mathcal{T} characterized by the membership function \mathcal{F} , $d_j = \sum_{i=1}^l \mathcal{F}(d_j, t_i)/t_i$.

3.2 The Query Subsystem

The query subsystem accepts weighted Boolean queries whose query weights are ordinal linguistic values. By assigning weights in queries, users specify restrictions on the documents that the IRS has to satisfy in the retrieval activity. We observe that in a typical Boolean query there are four possible weighting levels [10, 12]: the level of terms, the level of sub-expressions, the level of whole query and the level of the Boolean connectives AND and OR. Most defined IRSs support mainly the first three weighting levels, although not simultaneously. However, it is obvious that the retrieval activity strongly depends on the operators used to model the action of connectives. Therefore, the use of the fourth level would allow users to control the action of operators and guide better the retrieval of their desired documents.

We assume that users can simultaneously use two weighting levels, terms and connectives, to express their desired documents. Accordingly, the set of the legitimate queries \mathcal{Q} is defined by the following syntactic rules:

1.- $\forall q = \langle t_i | c^1 \rangle \rightarrow q \in \mathcal{Q}$, where $t_i \in \mathcal{T}$ and $c^1 \in \mathcal{S}$ is the ordinal linguistic weight assigned by a user in the weighting level of index terms. This rule defines simple queries (atoms).

2.- $\forall q = \langle \bigwedge_{k=1}^{n \geq 2} q_k, c^2 \rangle, q_k \in \mathcal{Q} \rightarrow q \in \mathcal{Q}$, where $c^2 \in \mathcal{S}$ is the ordinal linguistic weights assigned by a user in the weighting level of connectives to combine terms in the sub-expressions. This rule defines the queries expressed by conjunctive queries AND.

3.- $\forall q = \langle \bigvee_{k=1}^{n \geq 2} q_k, c^2 \rangle, q_k \in \mathcal{Q} \rightarrow q \in \mathcal{Q}$. This rule defines the queries expressed by disjunctive queries OR.

4.- $\forall q \rightarrow \neg q \in \mathcal{Q}$. This rule defines negated queries.

5.- All legitimate queries are only those obtained by applying rules 1-4, inclusive.

We should point out that all ordinal linguistic weights used in a query are terms of the linguistic variable *Importance*, but modeling different semantics or interpretations depending on the weighting level.

To sum up, we propose a query subsystem with a multi-level weighted query language which manages two possible weighting levels. Then, in the formulation of any query the users can assign two kinds of weights: 1) weights on query terms which are associated to a *threshold semantics*, and 2) weights on query connectives which are associated to a *control semantics*.

By associating threshold weights [6, 7, 13] with terms in a query, the user is asking to see all the documents sufficiently related to the topics represented by such terms. The weights in the connectives can act as modifiers of the action of classical connectives AND and OR. By assigning weights in the connectives of a query the users can carry out a soft control on the retrieval of system in order to guide its action towards their desired documents. The control semantics defines weights of connectives AND and OR as *andness* and *orness* measures that control the restrictive and inclusive behaviour of the connectives AND and OR in the computation of RSVs, respectively.

3.3 The Evaluation Subsystem

The evaluation subsystem is implemented by the matching or evaluation function \mathcal{E} , which assesses the relationship between \mathcal{Q} and \mathcal{D} by means of linguistic RSVs taken from the linguistic variable "Relevance". Therefore, the goal of \mathcal{E} consists of evaluating documents in terms of their relevance to a multi-level weighted query according to two weighting levels. We define \mathcal{E} by means of a constructive bottom-up evalu-

ation process that satisfies the *criterion of separability* [8, 15] at the same time as supporting all the weighting semantics.

The evaluation function \mathcal{E} acts in two steps:

1.- firstly, the documents are evaluated according to their relevance only to atoms of the query. In this step, a partial RSV is assigned to each document with respect to each atom, and

2.- the documents are evaluated according to their relevance to Boolean combinations of atomic components (their partial RSVs), and so on, working in a bottom-up method until the whole query is processed. In this step, a total RSV is assigned to each document with respect to the whole query.

Therefore, a set of linguistic terms \mathcal{S} is used to represent the relevance values.

Then, given any query $q \in \mathcal{Q}$, we define $\mathcal{E} : \mathcal{D} \times \mathcal{Q} \rightarrow \mathcal{S}$ according to the following four evaluation rules:

1.- If $q = \langle t_i, c^1 \rangle$ then

$$\mathcal{E}(d_j, q) = g(d_j, t_i, c^1),$$

where $g : \mathcal{D} \times \mathcal{T} \times \mathcal{S} \rightarrow \mathcal{S}$ is the linguistic matching function to model the threshold semantics defined to the following expression: $g(d_j, t_i, c^1) =$

$$\begin{cases} s_{b1} & \text{if } s_a \geq c^1 \\ s_{b2} & \text{otherwise.} \end{cases} \quad \text{where } s_a = \text{Label}(\mathcal{F}(d_j, t_i)),$$

$\text{Label} : [0, 1] \rightarrow \mathcal{S}$ is a function that assigns a label in \mathcal{S} to a numeric value $r \in [0, 1]$ according to the expression: $\text{Label}(r) = s_i$ with $i = \text{round}(\mathcal{G} \cdot r)$, being $\text{round}(\cdot)$ the usual "round" operator; $b1 = \min(\mathcal{G}, a + \text{round}(2 \cdot \frac{\mathcal{G}-a}{\mathcal{G}}))$; and $b2 = \max(0, a - \text{round}(2 \cdot \frac{\mathcal{G}-a}{\mathcal{G}}))$.

2.- If $q = \langle \bigwedge_{k=1}^n q_k, c^2 \rangle, q_k \in \mathcal{Q}$, then

$$\mathcal{E}(d_j, q) = \phi^{SA}(RSV_{1j}, \dots, RSV_{kj}),$$

with $RSV_{kj} = \mathcal{E}(d_j, q_k) \forall k$, and $\alpha = \text{andness}(W^{SA}), \alpha \in [0.5, 1]$ defined as $\alpha = \frac{1 + \text{Label}^{-1}(c^2)}{2}$, and $\text{Label}^{-1} : \mathcal{S} \rightarrow [0, 1]$ being the translation function that assigns a numerical characteristic value to a label $s_i \in \mathcal{S}$ according to the following expression: $\text{Label}^{-1}(s_i) = \frac{i}{\mathcal{G}}$.

3.- If $q = \langle \bigvee_{k=1}^n q_k, c^2 \rangle, q_k \in \mathcal{Q}$, then

$$\mathcal{E}(d_j, q) = \phi^{SO}(RSV_{1j}, \dots, RSV_{kj}),$$

with $RSV_{kj} = \mathcal{E}(d_j, q_k) \forall k$, and $\alpha = \text{orness}(W^{SO}), \alpha \in [0.5, 1]$ defined as $\alpha = \frac{1 + \text{Label}^{-1}(c^2)}{2}$,

4.- If q is negated then

$$\mathcal{E}(d_j, \neg q) = \text{NEG}(\mathcal{E}(d_j, q)).$$

Note that if $c^2 = s_0$ then $\alpha = 0.5$ and both operators (ϕ^{SA} and ϕ^{SO}) act as a linguistic averaging operator. If $c^2 = s_{\mathcal{G}}$ then $\alpha = 1$ and both operators become the classical logical Boolean connectives. This value is assumed by the system when users do not want to specify a value c^2 . With the linguistic $s_0 < c^2 < s_{\mathcal{G}}$ users can control the restrictive/inclusive behaviour of ϕ^{SA}/ϕ^{SO} . Note that the closer c^2 is to $s_{\mathcal{G}}$, the closer the behaviour of its respective ϕ^{SA}/ϕ^{SO} is to MIN/MAX operator; while the closer to s_0 , the closer to the linguistic averaging/averaging operator.

When the evaluation subsystem finishes, the IRS presents the retrieved documents arranged in linguistic relevance classes in decreasing order of \mathcal{E} , in such a way, that the maximal number of classes is limited by the cardinality of the set of labels chosen for the linguistic variable *Relevance*.

4 Operation of the Linguistic Weighted IRS

In this section we present an example of performance of the linguistic weighted IRS defined above.

Let us suppose a small archive of documents containing a set of seven documents $\mathcal{D} = \{d_1, \dots, d_7\}$, represented by means of a set of ten index terms $\mathcal{T} = \{t_1, \dots, t_{10}\}$. Documents are indexed by means of an indexing function \mathcal{F} , which represents them as follows:

$$d_1 = 0.7/t_5 + 0.4/t_6 + 1/t_7$$

$$d_2 = 1/t_4 + 0.6/t_5 + 0.8/t_6 + 0.9/t_7$$

$$d_3 = 0.5/t_2 + 1/t_3 + 0.8/t_4$$

$$d_4 = 0.9/t_4 + 0.5/t_6 + 1/t_7$$

$$d_5 = 0.7/t_3 + 1/t_4 + 0.4/t_5 + 0.8/t_9 + 0.6/t_{10}$$

$$d_6 = 0.8/t_5 + 0.99/t_6 + 0.8/t_7$$

$$d_7 = 0.8/t_5 + 0.02/t_6 + 0.8/t_7 + 0.9/t_8.$$

Using the set of the nine labels $\mathcal{S} = \{s_0 = N, s_1 = EL, s_2 = VL, s_3 = L, s_4 = M, s_5 = H, s_6 = VH, s_7 = EH, s_8 = T\}$, consider that a user formulates the following query: $q = ((t_5, VH) \vee^H (t_7, H)) \wedge^L ((t_6, L) \vee^H (t_3, H))$.

With such query the user is declaring his/her interest in a set of documents built using the most representative documents which satisfy the restrictions imposed in the query. It expresses that the set of desired documents must be built, on the one hand, from a subset of documents at least dealing to a very great extent with the concept(s) represented by the term t_5 and at least dealing to a lower extent with the concept(s) rep-

represented by the term t_7 , and on the other hand, from a subset of documents at least dealing to a low extent with the concept(s) represented by the term t_6 and at least a high extent with the concept(s) represented by the term t_3 . Furthermore, the user is expressing his/her preferences on the behaviour that the action of the Boolean connectives must have in the computation process of RSVs. On the one hand, the connectives OR must be modeled like a MAX operation in a high degree, and thus, its behaviour must be of a high degree of inclusive (closer the averaging operator than the MAX operator). And on the other hand, the connective AND must be modeled like a MIN operation in a low degree, and thus, its behaviour must be moderately restrictive.

To illustrate the usefulness of multi-level weighting scheme to control the retrieval process, firstly, we have to obtain the document representation expressed in a linguistic form using the translation function *Label* and the terms set S defined above:

$$d_1 = VH/t_5 + L/t_6 + T/t_7$$

$$d_2 = T/t_4 + H/t_5 + VH/t_6 + EH/t_7$$

$$d_3 = M/t_2 + T/t_3 + VH/t_4$$

$$d_4 = EH/t_4 + M/t_6 + T/t_7$$

$$d_5 = VH/t_3 + T/t_4 + L/t_5 + VH/t_9 + H/t_{10}$$

$$d_6 = VH/t_5 + T/t_6 + VH/t_7$$

$$d_7 = VH/t_5 + EL/t_6 + VH/t_7 + EH/t_8.$$

We shall show different answers carried out by the IRS proposed: a.) assuming weights to control the behaviour of the connectives, and b.) not assuming weights to control the behaviour of the connectives.

The evaluation of q is carried out in the following steps:

1.- Evaluation of the atomic elements with respect to the threshold semantics: all atoms are evaluated by means of the function g :

$$\text{- For } t_5: \{RSV_1^{5,1} = EH, RSV_2^{5,1} = M, RSV_5^{5,1} = VL, RSV_6^{5,1} = EH, RSV_7^{5,1} = EH\}$$

$$\text{- For } t_7: \{RSV_1^{7,1} = T, RSV_2^{7,1} = EH, RSV_4^{7,1} = T, RSV_6^{7,1} = EH, RSV_7^{7,1} = EH\}$$

$$\text{- For } t_6: \{RSV_1^{6,1} = M, RSV_2^{6,1} = EH, RSV_4^{6,1} = H, RSV_6^{6,1} = T\}$$

$$\text{- For } t_3: \{RSV_3^{3,1} = T, RSV_5^{3,1}\} \text{ where, for example the } RSV_1^{6,1} \text{ is calculated as:}$$

$$RSV_1^{6,1} = g(d_1, t_6, L) = s_{\min(8, 3 + \text{round}(2 \cdot \frac{8-3}{8}))=4} = M, \text{ given that the condition } s_a = L \geq c^1 = L \text{ is true.}$$

2.- Evaluation of combined atoms: the query q has

two sub-queries: $q^1 = (t_5, VH) \vee^H (t_7, H)$ and $q^2 = (t_6, L) \vee^H (t_3, H)$ both combined by a weighted connective AND (\wedge^L). To evaluate the whole query we have to do as follows:

2.1.- To evaluate each sub-query applying the weighted connectives OR (\vee^H), this is done as follows:

$$\text{- For } q^1: \{RSV_1^1 = T, RSV_2^1 = VH, RSV_4^1 = EH, RSV_5^1 = VL, RSV_6^1 = EH, RSV_7^1 = EH\}.$$

$$\text{- For } q^2: \{RSV_1^2 = L, RSV_2^2 = H, RSV_3^2 = EH, RSV_4^2 = M, RSV_5^2 = VH, RSV_6^2 = EH\}.$$

where RSV_j^v is the result of evaluating the document d_j with respect to the sub-query q^v , $v \in \{1, 2\}$.

For example RSV_1^1 is calculated as:

$$RSV_1^1 = \phi^{SO}(RSV_1^{5,1}, RSV_1^{7,1}) = \phi^{SO}(EH, T) = T,$$

with a weighting vector $W^{SO} = [.8125, .1875]$, which is calculated using an $\alpha = \frac{1+Label^{-1}(H)}{2} = \frac{1+\frac{8}{8}}{2} = .8125$, where $w_1 = \frac{2-2\cdot\alpha}{2} + 2\cdot\alpha - 1 = .8125$ and $w_2 = \frac{2-2\cdot\alpha}{2} = .1875$.

In the case of using the classical linguistic t-conorm MAX to model the behaviour of the non-weighted connectives OR, we would have obtained the following:

$$\text{- For } q^1: \{RSV_1^1 = T, RSV_2^1 = EH, RSV_4^1 = T, RSV_5^1 = VL, RSV_6^1 = EH, RSV_7^1 = EH\}.$$

$$\text{- For } q^2: \{RSV_1^2 = M, RSV_2^2 = EH, RSV_3^2 = T, RSV_4^2 = H, RSV_5^2 = EH, RSV_6^2 = T\}.$$

2.2.- To evaluate the whole query applying the weighted connective AND (\wedge^L), this is done as follows:

$$\{RSV_6 = EH, RSV_1 = H, RSV_2 = H, RSV_4 = H, RSV_5 = L, RSV_3 = VL, RSV_7 = VL\}$$

where RSV_j is the result of evaluating the document d_j with respect to the whole query q .

For example RSV_1 is calculated as:

$$RSV_1 = \phi^{SA}(RSV_1^1, RSV_1^2) = \phi^{SA}(T, L) = H,$$

with a weighting vector $W^{SA} = [.3125, .6875]$, which is calculated using an $\alpha = \frac{1+Label^{-1}(L)}{2} = \frac{1+\frac{3}{8}}{2} = .6875$, where $w_2 = \frac{2-2\cdot\alpha}{2} + 2\cdot\alpha - 1 = .6875$ and $w_1 = \frac{2-2\cdot\alpha}{2} = .3125$.

In the case of using the classical linguistic t-norm MIN to model the behaviour of the non-weighted connective AND, we would have obtained the following:

$$\{RSV_2 = EH, RSV_6 = EH, RSV_4 = H, RSV_1 = M, RSV_5 = VL\}.$$

We can observe that the use of the S-LOWA operators to model the connectives AND and OR (and

to control their behaviour) incorporates more flexibility in the computation of the results. For example, a weighted linguistic IRS using S-LOWA operators (IRS-S) retrieves at least the same documents as an IRS that does not use them. It is possible that an IRS-S retrieves more documents by softening the restrictive behavior of the AND connective. For example, documents d_3 and d_7 are removed from the final output if we don't use weighted connectives, and they are considered using weighted connectives.

5 Conclusions

In this paper, we have presented a new family of parameterized soft computing operators, called S-LOWA operators. These s-LOWA operators have been proposed for modelling the control semantics in the action of the connectives AND and OR in an ordinal fuzzy linguistic information retrieval system. With these S-LOWA operators, users of ordinal fuzzy linguistic IRSs can specify better the characteristics of documents that they desire. In such a way, users control or guide better the retrieval process of IRS in order to effectively retrieve documents satisfying their concepts of relevance.

This work has been supported by the projects: GLIRS-II, Ref. TIC-2003-07977 and Proyecto de Excelencia de la Junta de Andalucía SAINFOWEB, Cod. 00602.

References

- [1] R. Baeza-Yates and B. Ribeiro-Neto, *Modern information retrieval*, Addison-Wesley, 1999.
- [2] A. Bookstein, *Fuzzy request: An approach to weighted boolean searches*, Journal of the American Society for Information Science and Technology (1980), no. 31, 240-247.
- [3] G. Bordogna, P. Carrara, and G. Pasi, *Query term weights as constraints in fuzzy information retrieval*, Information Processing and Management 27 (1991), no. 1, 15-26.
- [4] G. Bordogna and G. Pasi, *A fuzzy linguistic approach generalizing boolean information retrieval: A model and its evaluation*, Journal of the American Society for Information Science 44 (1993), no. 2, 70-82.
- [5] ———, *An ordinal information retrieval model*, International Journal of Uncertainty, Fuzziness and Knowledge-Based Systems 9 (2001), 63-76.
- [6] D. Buell and D.H. Kraft, *A model for a weighted retrieval system*, Journal of the American Society for Information Science 32 (1981), 211-216.
- [7] ———, *Threshold values and boolean retrieval systems*, Information Processing and Management 17 (1981), 127-136.
- [8] C.S. Cater and D.H. Kraft, *A generalization and clarification of the Waller-Kraft wish-list*, Information Processing and Management 25 (1989), 15-25.
- [9] F. Herrera, E. Herrera-Viedma, and J.L. Verdegay, *Direct approach processes in group decision making using linguistic OWA operators*, Fuzzy Sets and Systems 79 (1996), 175-190.
- [10] E. Herrera-Viedma, *Modelling the retrieval process for an information retrieval system using an ordinal fuzzy linguistic approach*, Journal of the American Society for Information Science and Technology 52 (2001), no. 6, 460-475.
- [11] E. Herrera-Viedma, O. Cordon, M. Luque, A.G. López-Herrera, and A.M. Muñoz, *A model of fuzzy linguistic irs based on multi-granular linguistic information*, International Journal of Approximate Reasoning 34 (2003), 221-239.
- [12] D.H. Kraft, G. Bordogna, and G. Pasi, *An extended fuzzy linguistic approach to generalize boolean information retrieval*, Information Sciences 2 (1994), 119-134.
- [13] D.H. Kraft and D.A. Buell, *Fuzzy sets and generalized boolean retrieval systems*, International Journal of Man-Machine Studies 19 (1983), 45-56.
- [14] G. Salton and M.J. McGill, *An introduction to modern information retrieval*, McGraw-Hill, 1983.
- [15] W.G. Waller and D.H. Kraft, *A mathematical model of a weighted boolean retrieval system*, Information Processing and Management 15 (1979), 235-245.
- [16] Z. Xu, *An overview of methods for determining OWA weights*, International Journal of Intelligent Systems 20 (2005), 843-865.
- [17] R.R. Yager, *On ordered weighted averaging aggregation operators in multicriteria decision making*, IEEE Transactions on Systems, Man, and Cybernetics 18 (1988), 183-190.
- [18] R.R. Yager and D.P. Filev, *Parametrized "and-like" and "orlike" OWA operators*, International Journal of General Systems 22 (1994), 297-316.
- [19] L.A. Zadeh, *The concept of a linguistic variable and its applications to approximate reasoning. Part I, Information Sciences 8 (1975) 199-249, Part II, Information Sciences 8 (1975) 301-357, Part III, Information Sciences 9 (1975) 43-80.*

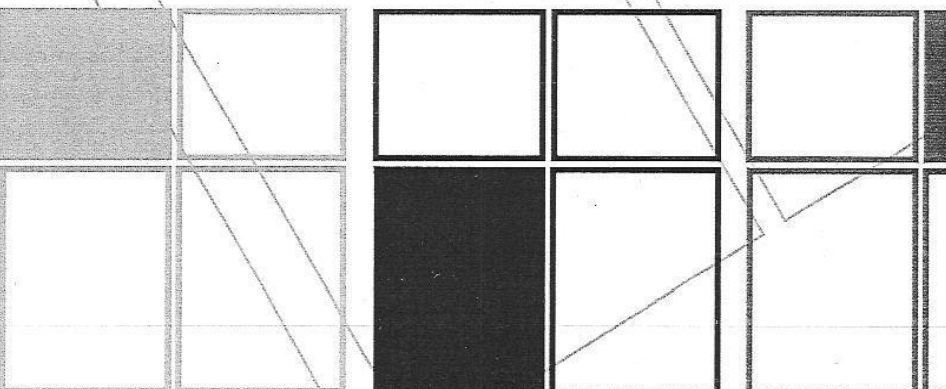
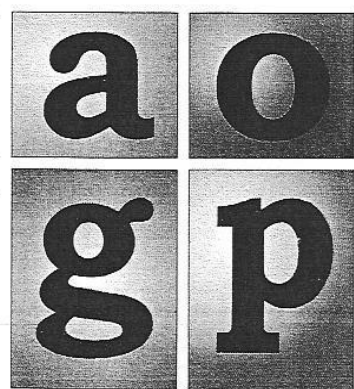
Mulholland's inequality and differential conditions for strict t-norms <i>S. Saminger, B. De Baets and H. De Meyer</i>	71
Triangular norms and semi-divisibility <i>A. Mesiarová-Zemánková</i>	77
Blocking anonymized data <i>J. Nin and V. Torra</i>	83
The Sugeno integral in MCDM with different scales <i>D. Bouyssou, T. Marchant and M. Pirlot</i>	89
Decision making with Dempster-Shafer theory using induced aggregation operators <i>J.M. Merigó and M. Casanovas</i>	95
Monotonic EOWA operators in sequential group decision making <i>I. Aguiló, M.A. Ballester, T. Calvo, J.L. García-Lapresta, G. Mayor and J. Suñer</i>	101
Type-1 OWA operators for aggregating fuzzy sets in decision making <i>S.-M. Zhou, F. Chiclana, R. John and J.M. Garibaldi</i>	107
S-LOWA operators to model the Boolean connectives in fuzzy linguistic queries <i>E. Herrera-Viedma, S. Alonso, F.J. Cabrerizo, A.G. López-Herrera and C. Porcel</i>	113
Vertical mixtures of copulas <i>P. Sarkoci</i>	119
Constructions of non-symmetric copulas <i>F. Durante</i>	123
A new diagonal construction for copulas <i>B. De Baets, H. De Meyer and R. Mesiar</i>	127
Flipping of aggregation operators <i>J. Kalická and R. Rückschloss</i>	131
Comparing fuzzy preference relations using fuzzy set operations <i>D. Hliněná and P. Král'</i>	135
Conjunctors originating from the disaggregation of fuzzy preference relations <i>S. Díaz, B. De Baets and S. Montes</i>	141
Some results on discrete copulas <i>J. Mordelová and A. Kolesárová</i>	145
On the relationships between triangular norms and semi-copulas <i>F. Durante, R. Mesiar and P.L. Papini</i>	151

AGOP 2007

July 9–14

Proceedings of the Fourth
International Summer School on
Aggregation Operators

Ghent, Belgium



Editors: Bernard De Baets, Koen C. Maes and
Radko Mesiar

ISBN: 978-90-382-1140-4

Academia Press, 2007

Chairmen

- Bernard De Baets (Faculty of Bioscience Engineering, UGent)
- Koen Maes (Faculty of Bioscience Engineering, UGent)
- Radko Mesiar (Faculty of Civil Engineering, Slovak University of Technology)

Program committee

- M. Baczynski (Poland)
- S. Bodjanova (USA)
- T. Calvo (Spain)
- B. De Baets (Belgium)
- H. De Meyer (Belgium)
- M. Demirci (Turkey)
- G. Deschrijver (Belgium)
- S. Diaz (Spain)
- J. Dujmovic (USA)
- J. Fodor (Hungary)
- M. Grabisch (France)
- E. Herrera-Viedma (Spain)
- M. Kalina (Slovak Republic)
- E.-P. Klement (Austria)
- A. Kolesarova (Slovakia)
- J.-L. Marichal (Luxembourg)
- K. Maes (Belgium)
- G. Mayor (Spain)
- R. Mesiar (Slovakia)
- S. Montes (Spain)
- E. Pap (Serbia)
- G. Pasi (Italy)
- S. Saminger (Austria)
- C. Sempi (Italy)
- V. Torra (Spain)
- J. Torrens (Spain)
- R. Yager (USA)

Organising committee

- Bernard De Baets (UGent)
- Hans De Meyer (UGent)
- Koen Maes (UGent)
- Michaël Rademaker (UGent)
- Koen Vanhoof (Hasselt University)